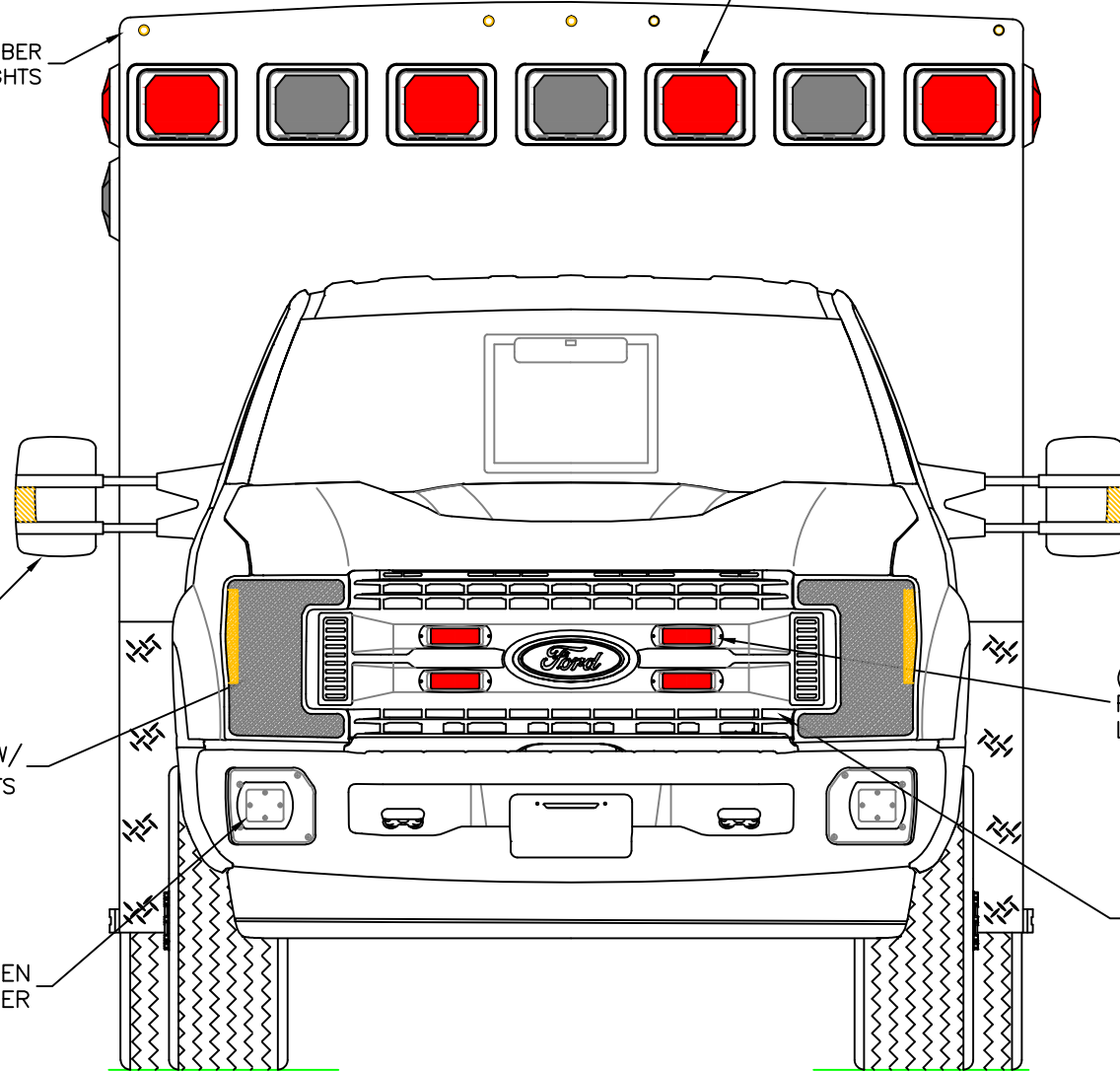


DIMENSIONS FOR OVERALL HEIGHT AND LENGTH ARE APPROXIMATE
 OVERALL HEIGHT = 109.75"
 OVERALL WIDTH WITH RUB
 RAILS & FENDERETTES = 95"

(7) WHELEN 900 SUPER LED WARNING LIGHTS
 RED/WHITE/RED/WHITE/RED/WHITE/RED
 WITH CLEAR LENSES

(5) TECNIQ S330 AMBER
 MINI-LED MARKER LIGHTS



OEM POWER
 ADJUSTABLE
 MIRRORS

FLASHING HEADLIGHTS W/
 DAYTIME RUNNING LIGHTS

CAST PRODUCTS SIREN
 SPEAKERS IN THE BUMPER

(4) WHELEN 500 SERIES
 RED SUPER LED GRILLE
 LIGHTS WITH CLEAR LENSES

HIDDEN UNLOCK SWITCH
 IN GRILLE AREA

THIS DRAWING IS FOR REPRESENTATIONAL PURPOSES ONLY. DETAILS ARE CONCEPTUAL AND ARE SUBJECT TO CHANGE DURING DESIGN AND CONSTRUCTION
 DIMENSIONS ARE APPROXIMATE UNLESS NOTED OTHERWISE TO MEET A SPECIFIC CUSTOMER NEED.

EEP DEMO



2016 FRONT EXTERIOR VIEW-EXPRESS PLUS
 2017 FORD F450 CHASSIS

1:17

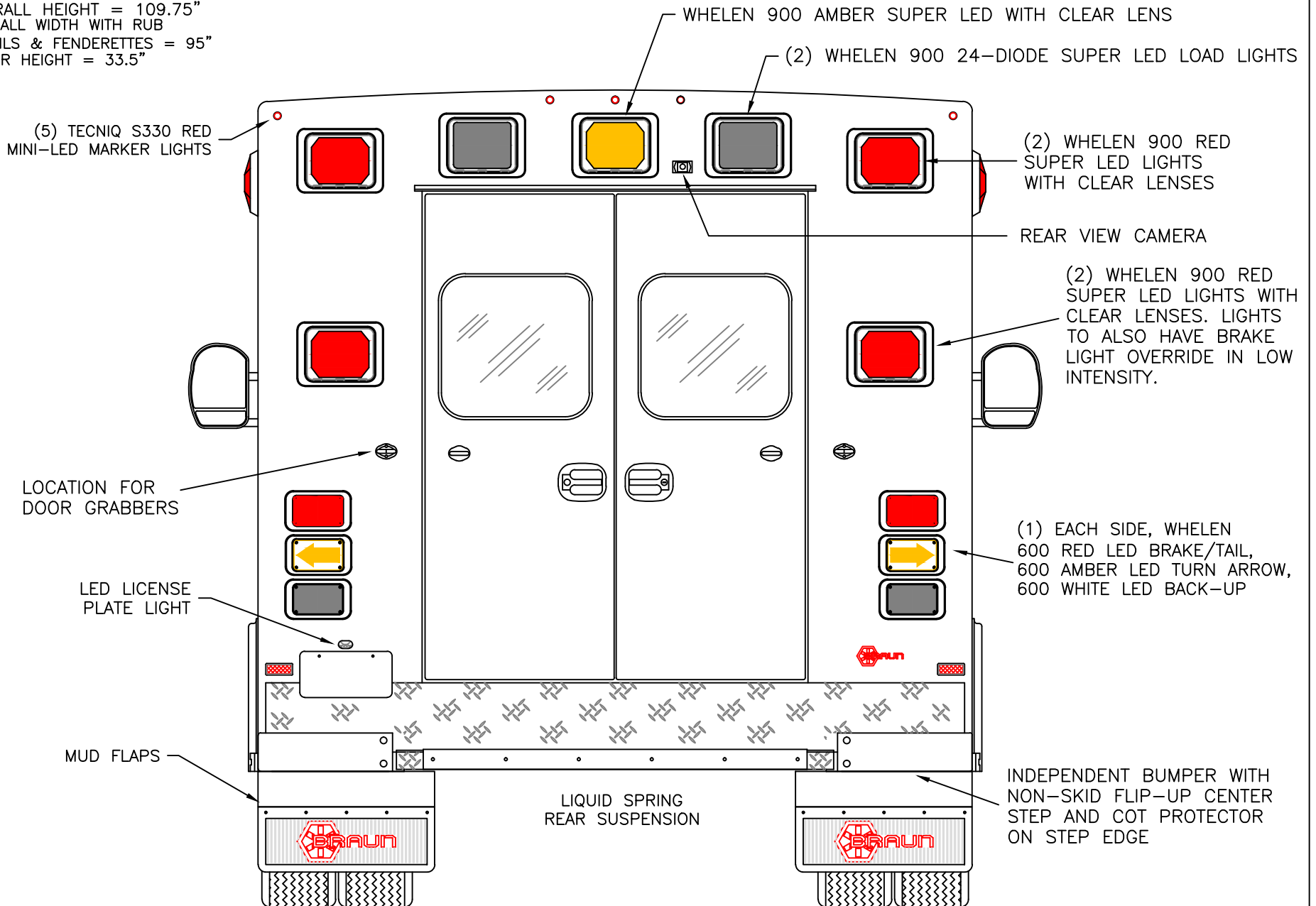
DATE:	10-13-16
DWG.	GLF
REV.	NR
DATE:	

DRAWING NO.

EEP-DEMO-1

APPROVAL SIGNATURE:

DIMENSIONS FOR OVERALL HEIGHT AND LENGTH ARE APPROXIMATE
 OVERALL HEIGHT = 109.75"
 OVERALL WIDTH WITH RUB
 RAILS & FENDERETTES = 95"
 FLOOR HEIGHT = 33.5"



THIS DRAWING IS FOR REPRESENTATIONAL PURPOSES ONLY. DETAILS ARE CONCEPTUAL AND ARE SUBJECT TO CHANGE DURING DESIGN AND CONSTRUCTION
 DIMENSIONS ARE APPROXIMATE UNLESS NOTED OTHERWISE TO MEET A SPECIFIC CUSTOMER NEED.

EPP DEMO



2016 REAR EXTERIOR VIEW
 EXPRESS PLUS

DATE:	10-13-16	DRAWING NO.
DWG.	GLF	REV.
	NR	EPP DEMO-2

1:16

DIMENSIONS FOR OVERALL HEIGHT AND LENGTH ARE APPROXIMATE
 OVERALL HEIGHT = 109.75"
 OVERALL LENGTH = 288"
 MODULE LENGTH = 150"

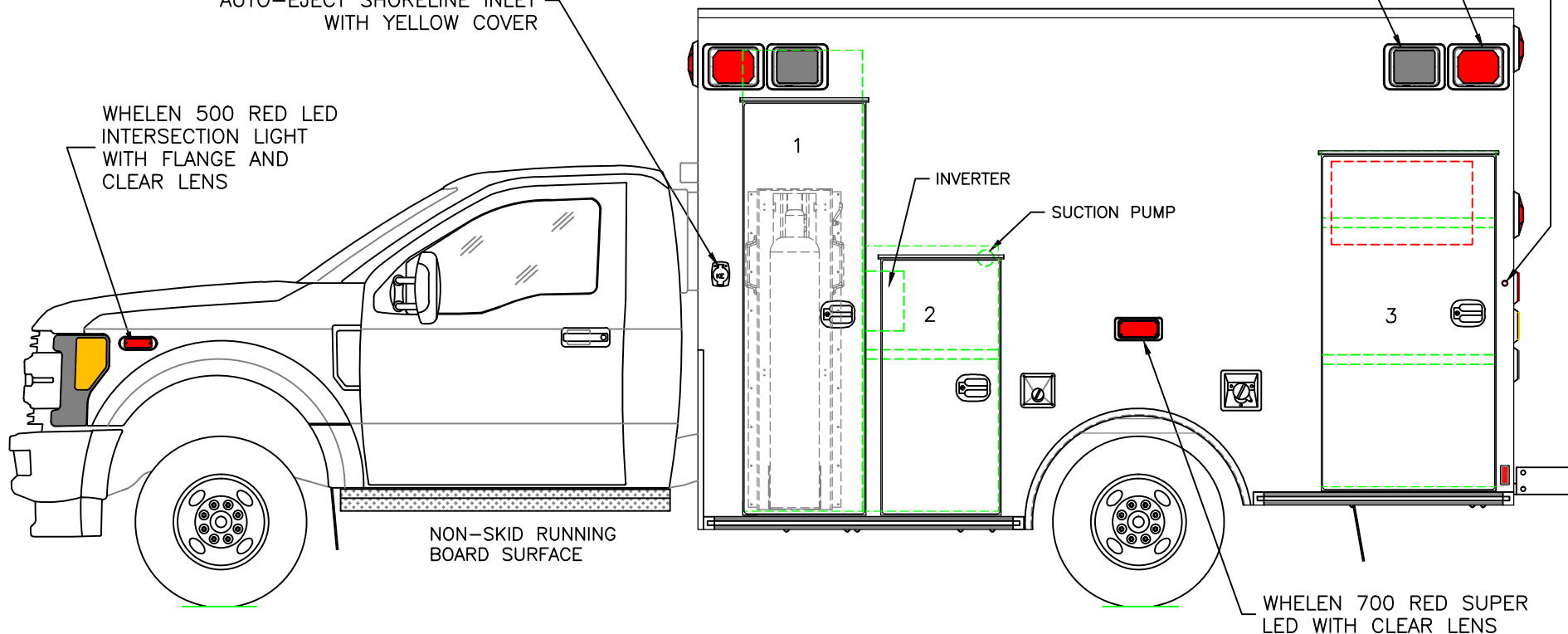
TECNIQ S330 RED MINI-LED MARKER LIGHT TO ALSO FLASH WITH TURN SIGNAL

(2) WHELEN 900 RED SUPER LED WARNING LIGHTS WITH CLEAR LENSES

(2) WHELEN 900 24-DIODE SUPER LED SCENE LIGHTS

KUSSMAUL 20 AMP SUPER AUTO-EJECT SHORELINE INLET WITH YELLOW COVER

WHELEN 500 RED LED INTERSECTION LIGHT WITH FLANGE AND CLEAR LENS



NON-SKID RUNNING BOARD SURFACE

WHELEN 700 RED SUPER LED WITH CLEAR LENS

COMPARTMENT

O.S.S #1

CLEAR OPENING: 74.50h x 18.50w
 INSIDE DIM'S.: 84.75h x 22.00w x 18.50d
 "EZ-02 LIFT" OXYGEN SYSTEM

O.S.S #2

CLEAR OPENING: 45.50h x 19.00w
 INSIDE DIM'S.: 48.75h x 24.75w x 18.50d
 (1) ADJUSTABLE SHELF

O.S.S #3

CLEAR OPENING: 60.25h x 28.50w
 INSIDE DIM'S.: 61.75h x 32.00w x 18.50d
 (2) ADJUSTABLE SHELVES
 INSIDE/OUTSIDE ACCESS

COMPARTMENTS TO HAVE TECNIQ E410 LIGHTS

THIS DRAWING IS FOR REPRESENTATIONAL PURPOSES ONLY. DETAILS ARE CONCEPTUAL AND ARE SUBJECT TO CHANGE DURING DESIGN AND CONSTRUCTION
 DIMENSIONS ARE APPROXIMATE UNLESS NOTED OTHERWISE TO MEET A SPECIFIC CUSTOMER NEED.

EEP DEMO



2016 STREETSIDE EXTERIOR VIEW-EXPRESS PLUS
 2017 FORD F450 CHASSIS

1:28

DATE:	11-17-16	
DWG.	AAB	REV. A

DRAWING NO.

EEP DEMO-3

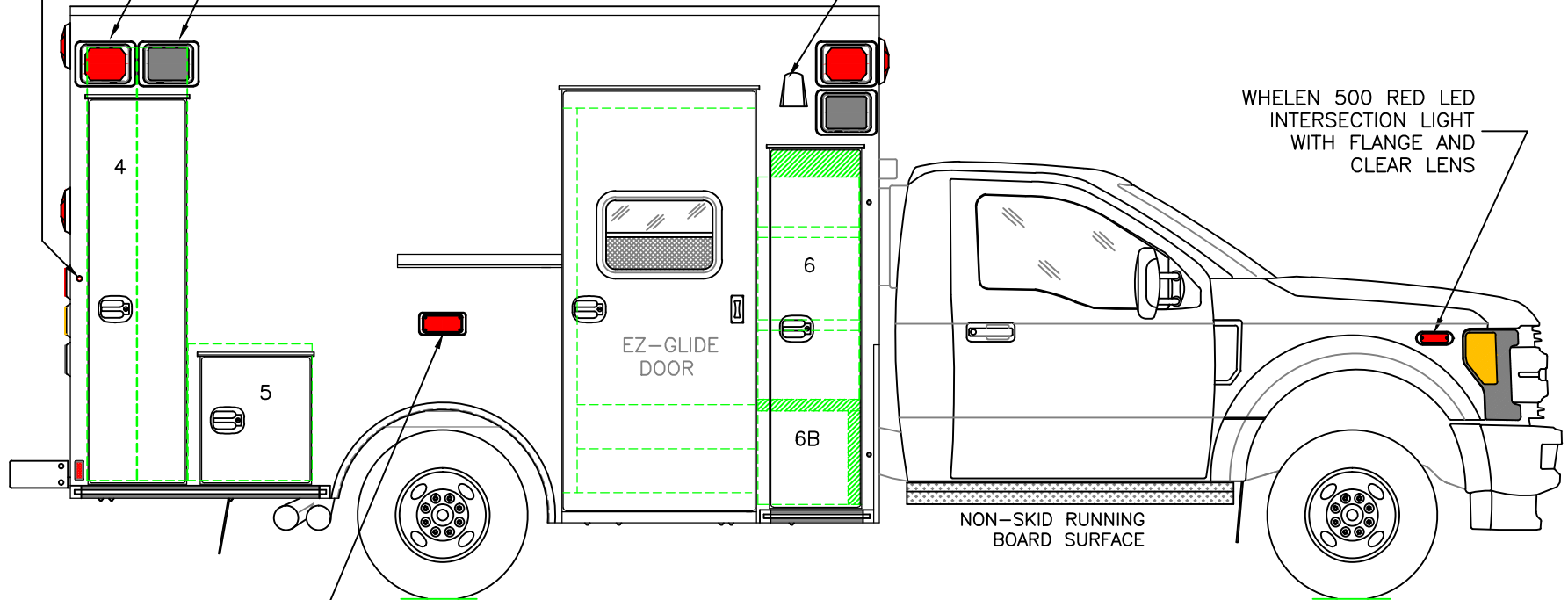
TECNIQ S330 RED MINI-LED MARKER LIGHT TO ALSO FLASH WITH TURN SIGNAL

DIMENSIONS FOR OVERALL HEIGHT AND LENGTH ARE APPROXIMATE
 OVERALL HEIGHT = 109.75"
 OVERALL LENGTH = 288"
 MODULE LENGTH = 150"

(2) WHELEN 900 RED SUPER LED WARNING LIGHTS WITH CLEAR LENSES

(2) WHELEN 900 24-DIODE SUPER LED SCENE LIGHTS

EXHAUST VENT



WHELEN 700 RED SUPER LED WITH CLEAR LENS

COMPARTMENT
 O.S.S #4

CLEAR OPENING: 70.00h x 15.00w
 INSIDE DIM'S.: 80.25h x 18.50w x 18.50d
 BACKBOARD/SCOOP STORAGE WITH CENTER VERTICAL DIVIDER

O.S.S #5

CLEAR OPENING: 22.25h x 17.00w
 INSIDE DIM'S.: 25.25h x 23.00w x 18.50d
 MISC. STORAGE COMPARTMENT

O.S.S #6

CLEAR OPENING: 65.25h x 13.50w
 INSIDE DIM'S. 6A: SEE PARTITION INTERIOR VIEW
 INSIDE/OUTSIDE STORAGE WITH (2) ADJUSTABLE SHELVES
 INSIDE DIM'S. 6B: 17.25h x 16.75w x 16.75d

COMPARTMENTS TO HAVE TECNIQ E410 LIGHTS

THIS DRAWING IS FOR REPRESENTATIONAL PURPOSES ONLY. DETAILS ARE CONCEPTUAL AND ARE SUBJECT TO CHANGE DURING DESIGN AND CONSTRUCTION DIMENSIONS ARE APPROXIMATE UNLESS NOTED OTHERWISE TO MEET A SPECIFIC CUSTOMER NEED.

EEP DEMO



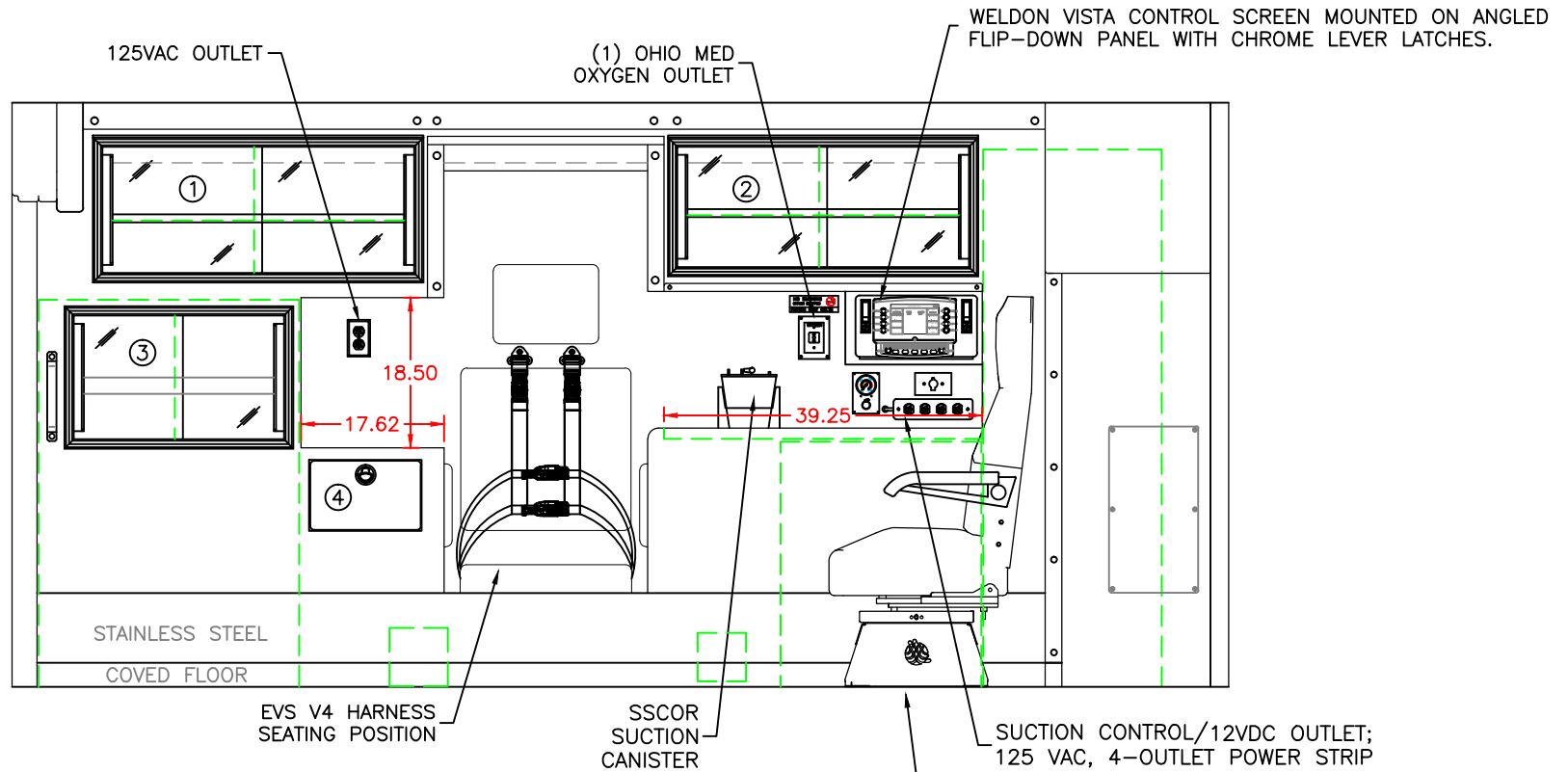
2016 CURBSIDE EXTERIOR VIEW-EXPRESS PLUS
 2017 FORD F450 CHASSIS

1:28

DATE: 11-17-16	DWG. AAB	REV. A
-------------------	-------------	-----------

DRAWING NO.
EEP DEMO-4

COMPARTMENTS #1 & #2 HAVE LIFT-UP RESTOCKING FRAMES



COMPARTMENT

#1 DOOR OPENING: 15.50h x 38.25w
 INSIDE DIMS: 17.75h x 40.25w x 16.25d
 (1) ADJUSTABLE SHELF
 SLIDING ACRYLIC CABINET DOORS

#2 DOOR OPENING: 14.75h x 35.75w
 INSIDE DIMS: 17.00h x 37.75w x 16.25d
 (1) ADJUSTABLE SHELF
 SLIDING ACRYLIC CABINET DOORS

#3 DOOR OPENING: 15.25h x 26.00w
 INSIDE DIMS: OSS #3
 INSIDE/OUTSIDE ACCESS
 SLIDING ACRYLIC CABINET DOORS

#4 PULL-OUT DRAWER
 INSIDE DIMS: 7.50h x 11.75w x 15.75d
 LOCKING STAINLESS STEEL FLUSH PULL LATCH

CABINETS #1 & #2 TO HAVE
 TECNIQ E410 LIGHTING

CABINETS TO BE ALUMINUM

THIS DRAWING IS FOR REPRESENTATIONAL PURPOSES ONLY. DETAILS ARE CONCEPTUAL AND ARE SUBJECT TO CHANGE DURING DESIGN AND CONSTRUCTION
 DIMENSIONS ARE APPROXIMATE UNLESS NOTED OTHERWISE TO MEET A SPECIFIC CUSTOMER NEED.

EEP DEMO

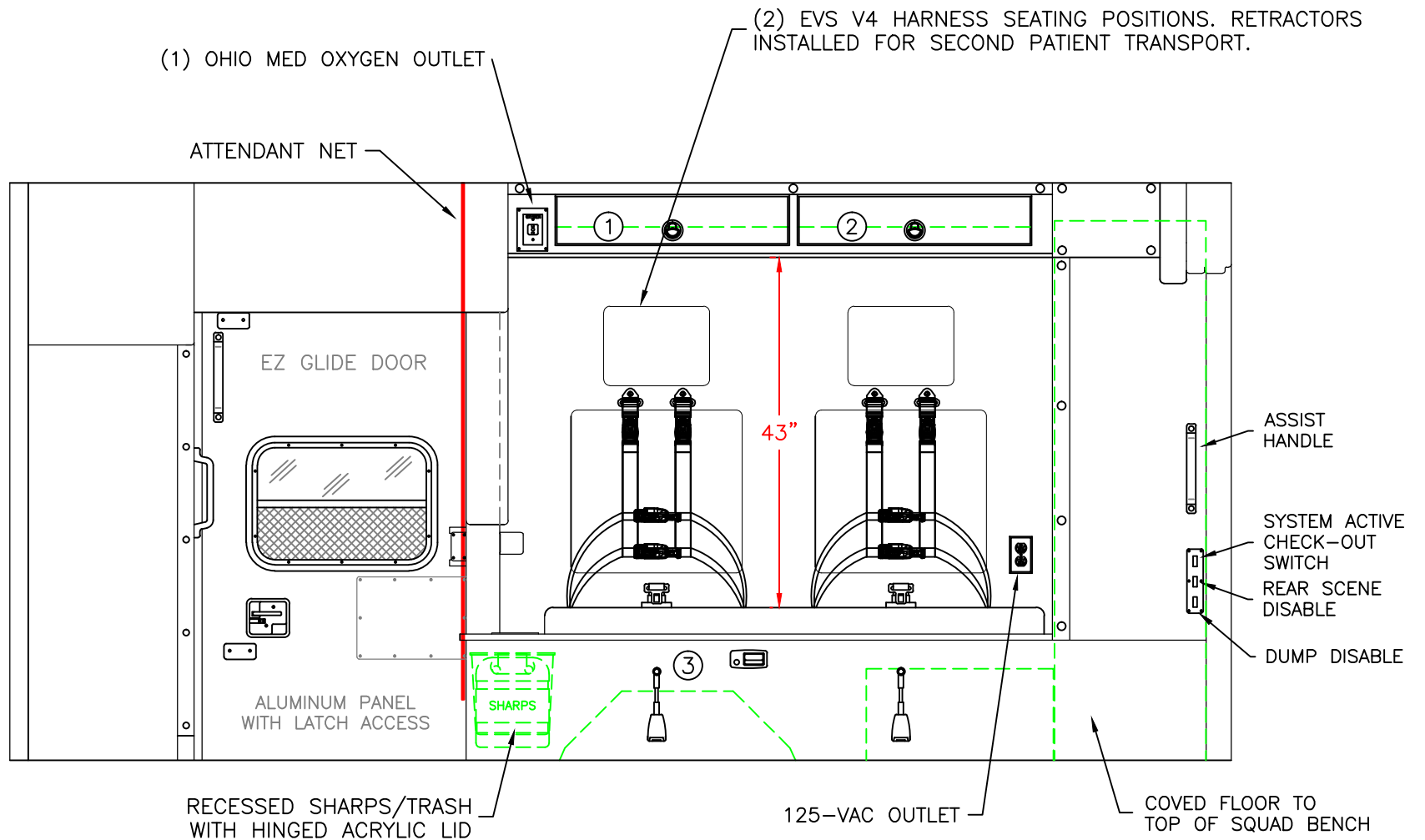


2016 STREETSIDE INTERIOR VIEW
 EXPRESS PLUS

1:20

DATE: 11-17-16	
DWG. AAB	REV. A

DRAWING NO.
EEP DEMO-5



COMPARTMENT

#1-#2 DOOR OPENINGS: 6.25h x 28.75w
 INSIDE DIMS: 6.25h x 28.75w x 18.00d
 LIFT-UP ACRYLIC DOORS WITH HOLD-OPENS
 LOCKING STAINLESS STEEL FLUSH PULL LATCHES

#3 INSIDE DIM'S.: 14.50h x 48.00w x 20.00d

CABINETS #1 & #2 TO HAVE
 TECNIQ E410 LIGHTING

CABINETS TO BE ALUMINUM

THIS DRAWING IS FOR REPRESENTATIONAL PURPOSES ONLY. DETAILS ARE CONCEPTUAL AND ARE SUBJECT TO CHANGE DURING DESIGN AND CONSTRUCTION
 DIMENSIONS ARE APPROXIMATE UNLESS NOTED OTHERWISE TO MEET A SPECIFIC CUSTOMER NEED.

EEP DEMO

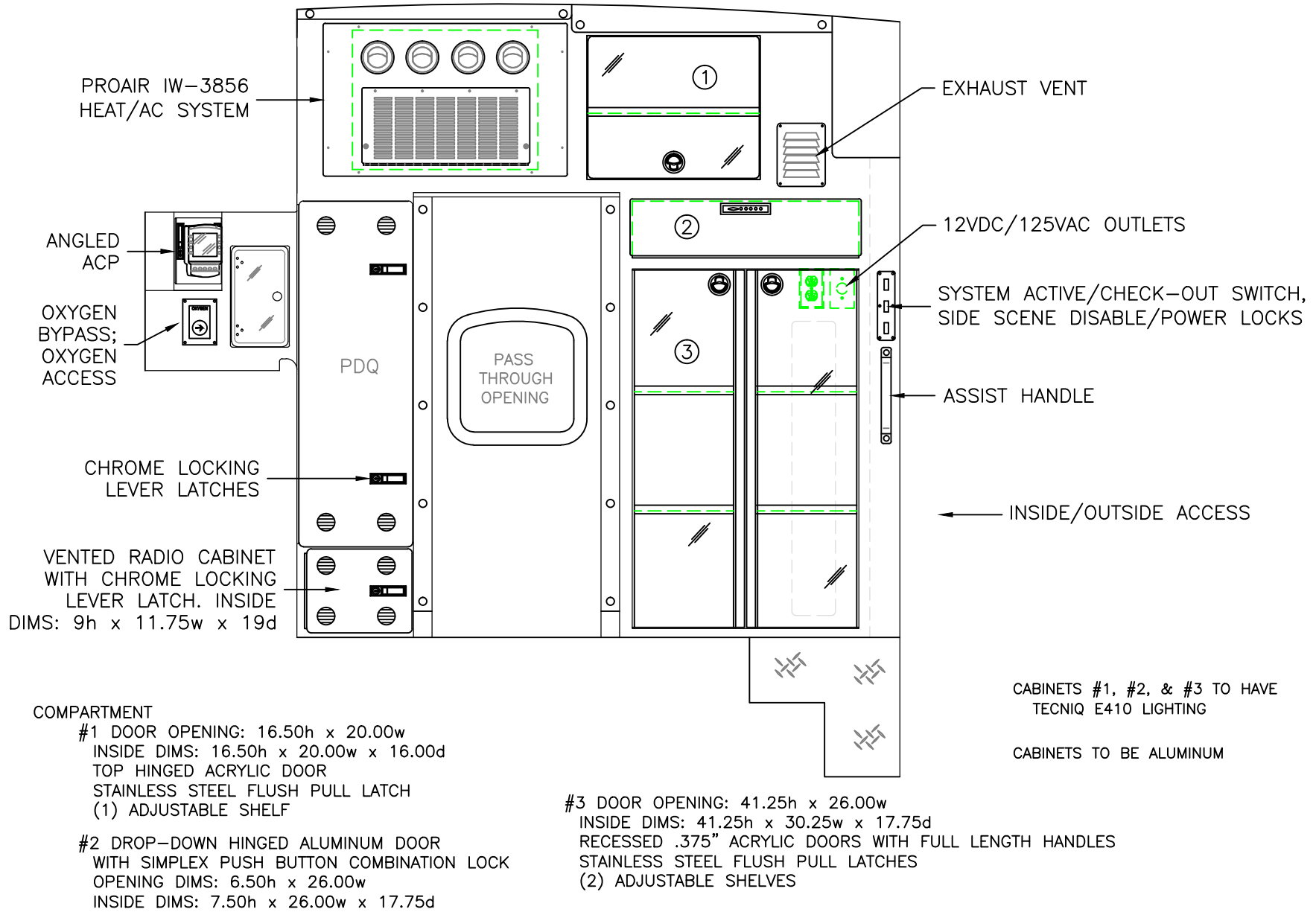


2016 CURBSIDE INTERIOR VIEW
 EXPRESS PLUS

1:18

DATE:	11-17-16
DWG.	AAB
REV.	A

DRAWING NO.	EEP DEMO-6
-------------	------------



THIS DRAWING IS FOR REPRESENTATIONAL PURPOSES ONLY. DETAILS ARE CONCEPTUAL AND ARE SUBJECT TO CHANGE DURING DESIGN AND CONSTRUCTION DIMENSIONS ARE APPROXIMATE UNLESS NOTED OTHERWISE TO MEET A SPECIFIC CUSTOMER NEED.

EEP DEMO



2016 PARTITION INTERIOR VIEW
 EXPRESS PLUS

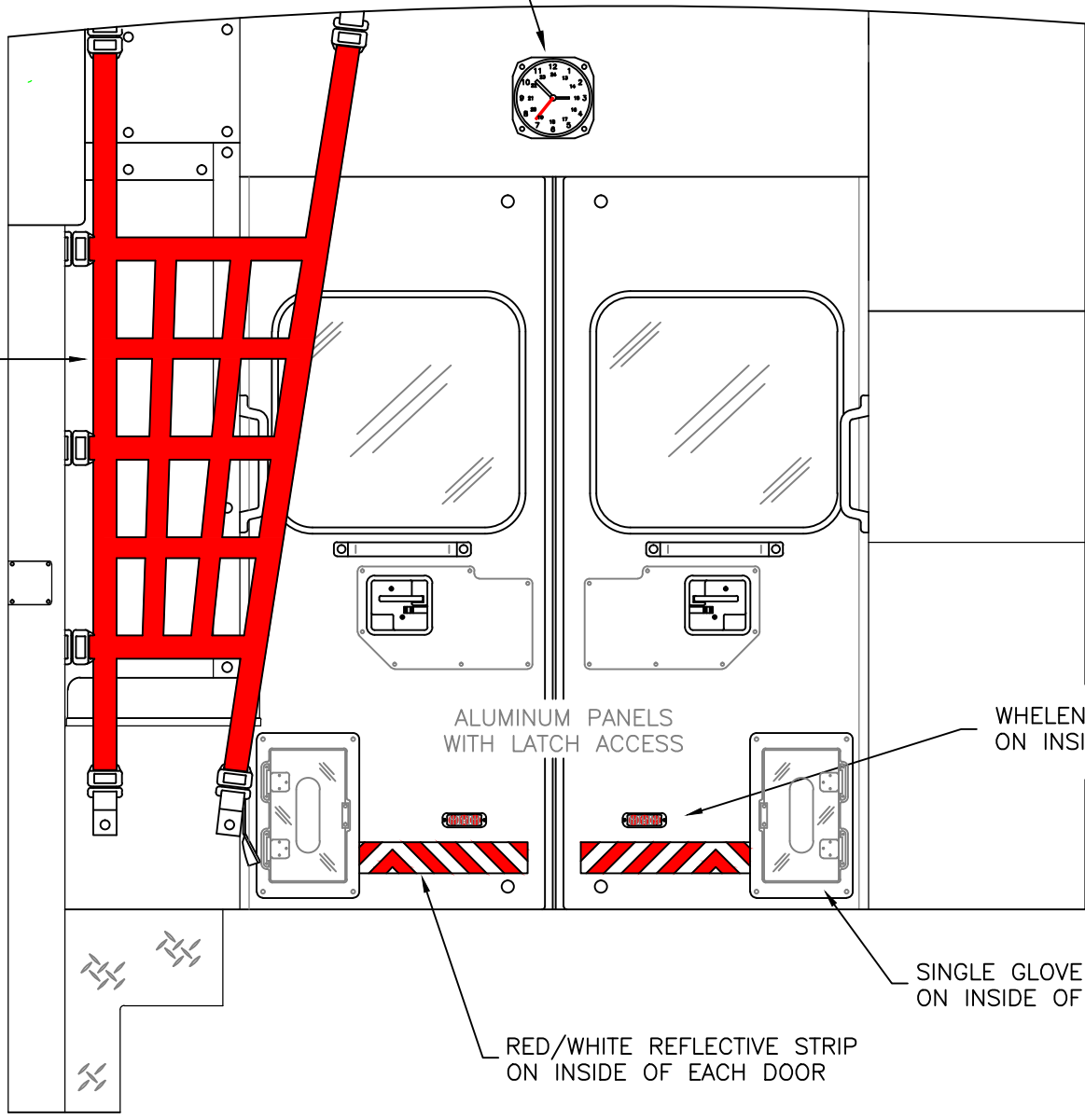
DATE:	11-17-16
DWG.	AAB
REV.	A

DRAWING NO.	EEP DEMO-7
-------------	------------

BATTERY POWERED TRINTEC 12/24 HOUR CLOCK



ATTENDANT NET



ALUMINUM PANELS WITH LATCH ACCESS

WHELEN TIR3 RED LED ON INSIDE OF EACH DOOR

SINGLE GLOVE BOX HOLDER ON INSIDE OF EACH DOOR

RED/WHITE REFLECTIVE STRIP ON INSIDE OF EACH DOOR

THIS DRAWING IS FOR REPRESENTATIONAL PURPOSES ONLY. DETAILS ARE CONCEPTUAL AND ARE SUBJECT TO CHANGE DURING DESIGN AND CONSTRUCTION DIMENSIONS ARE APPROXIMATE UNLESS NOTED OTHERWISE TO MEET A SPECIFIC CUSTOMER NEED.

EEP DEMO

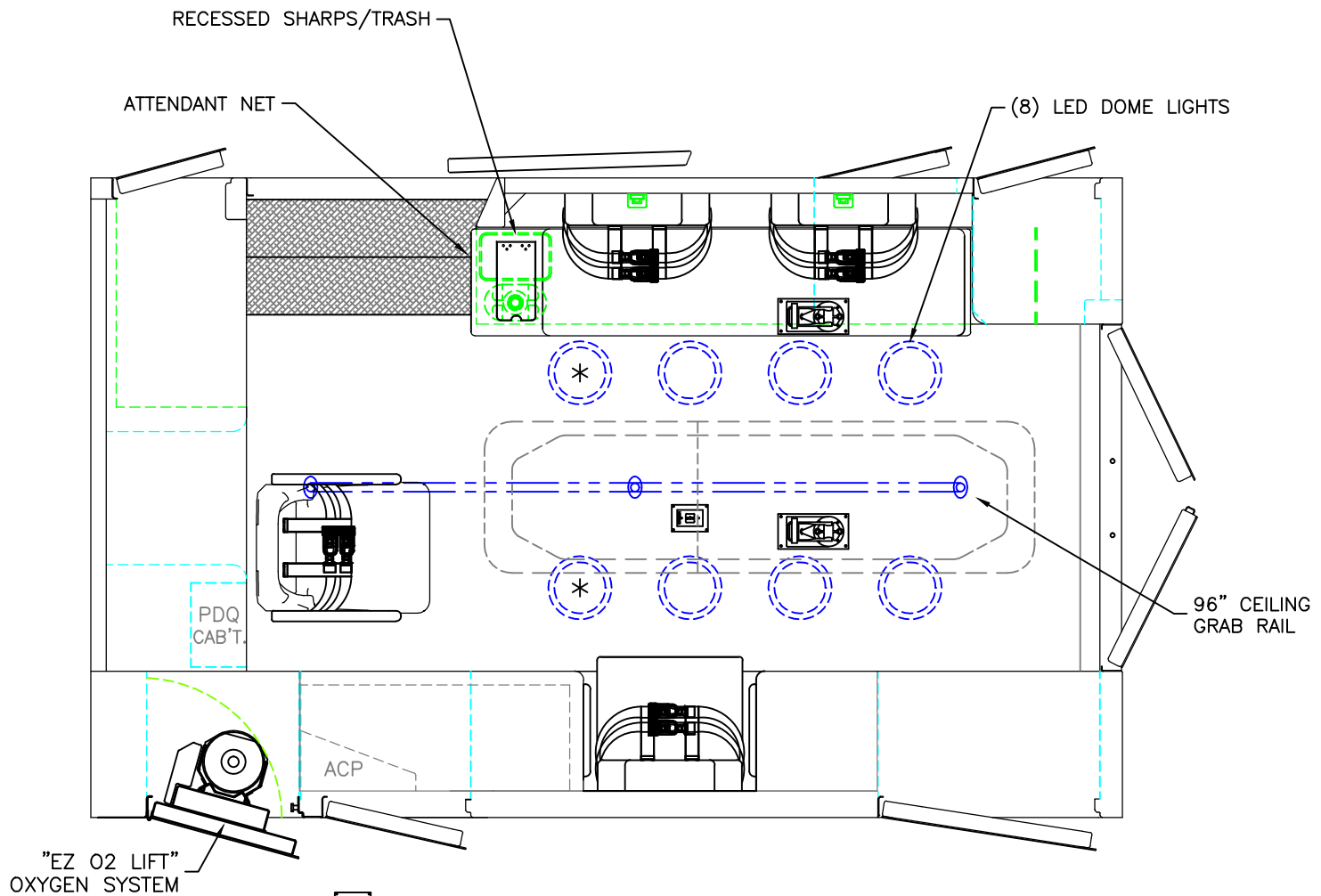


2016 REAR INTERIOR VIEW
EXPRESS PLUS

1:12

DATE:	10-14-16
DWG.	REV.
GLF	NR

DRAWING NO.
EEP DEMO-8



 = (1) CEILING OXYGEN OUTLET

 = (2) RECESSED CEILING IV HANGER LOCATIONS

* = (2) ANTENNA BASES LOCATED OUTBOARD OF DOME LIGHTS WITH COAX SERVICE LOOP

FLOOR ASSEMBLY TO HAVE TAPPING PLATES AND PRE-WIRE FOR FUTURE CN8 COMPLIANT COT HARDWARE (BRAND/MODEL TBD--COT OUTLINE SHOWN FOR REFERENCE)

MODULE WIDTH = 93"

MODULE LENGTH = 150"

MODULE HEAD ROOM = 72"

THIS DRAWING IS FOR REPRESENTATIONAL PURPOSES ONLY. DETAILS ARE CONCEPTUAL AND ARE SUBJECT TO CHANGE DURING DESIGN AND CONSTRUCTION DIMENSIONS ARE APPROXIMATE UNLESS NOTED OTHERWISE TO MEET A SPECIFIC CUSTOMER NEED.

EEP DEMO



2016 FLOOR INTERIOR VIEW
EXPRESS PLUS

1:20

DATE:	11-17-16
DWG.	AAB
REV.	A

DRAWING NO.
EEP DEMO-9