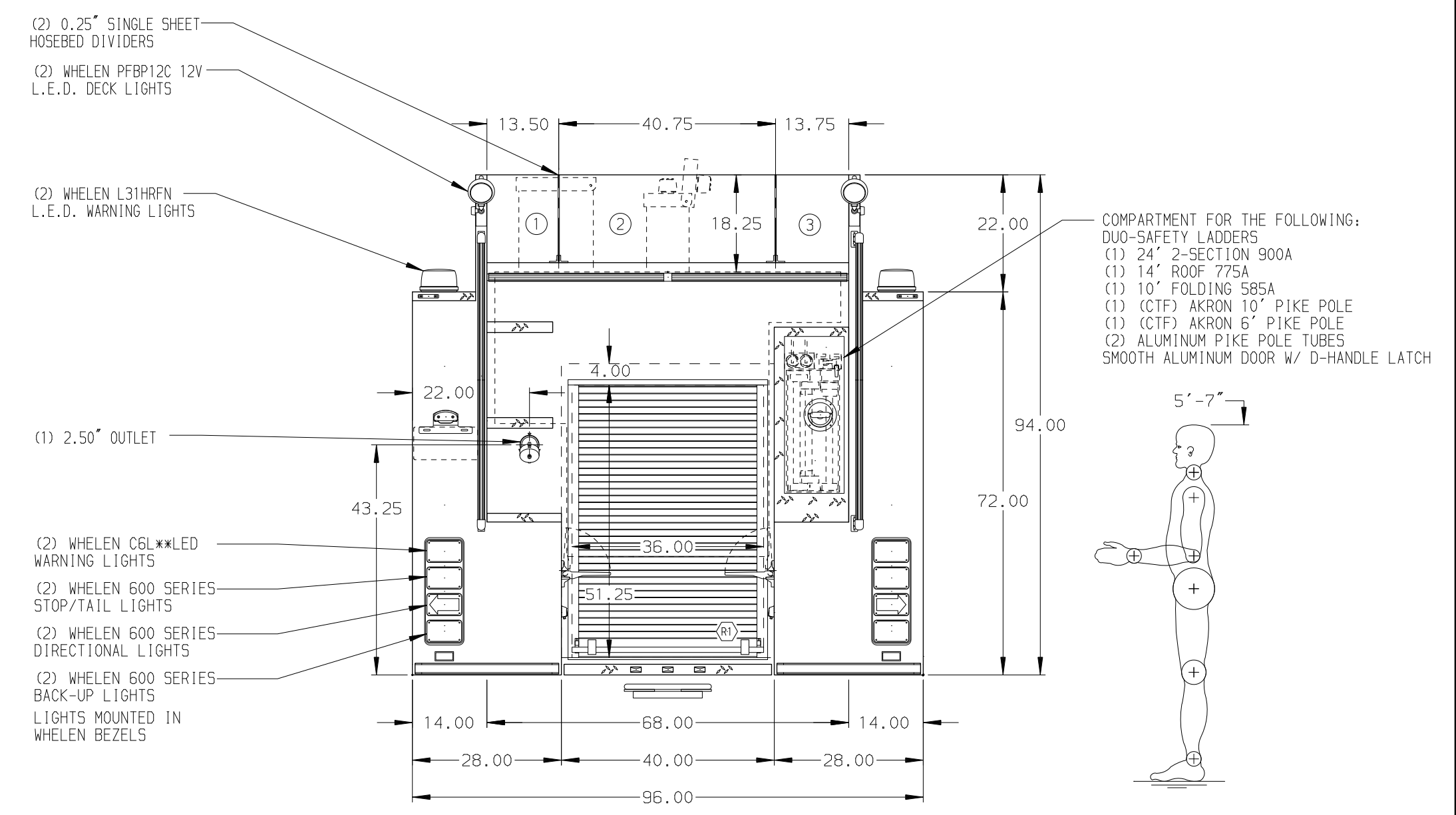


- HOSEBED CAPACITIES**
- ① 500' OF 2.50" D.J. HOSE
 - ② 1000' OF 5.00" D.J. HOSE
 - ③ 500' OF 2.50" D.J. HOSE



ALUMINUM BODY

NOTE
DIMENSIONS SHOWN ARE APPROXIMATE AND ARE SUBJECT TO MINOR DEVIATIONS AS MAY OCCUR OR BE NECESSARY IN CONSTRUCTION. MINOR DETAILS NOT SHOWN.

				Pierce MANUFACTURING INC.		JOB NO.	33131
						SCALE	1:24
						DATE	
						DRAWN BY	JLA
						CHECKED BY	CAG
						SHEET SIZE	D
						SHEET NO.	1 OF 1
CHASSIS DATA	TITLE	1500-D-1000P, 975 GAL WATER W/ 25 GAL FOAM, 152" PUMPER BODY, SIDE CONTROL, LADDERS BESIDE TANK.					
MAKE	FOR	PIERCE FIELD UNIT BRADENTON, FLORIDA					
MODEL	DWG NO.	33131AD					
REV	DATE	BY	CH	SABER FR			