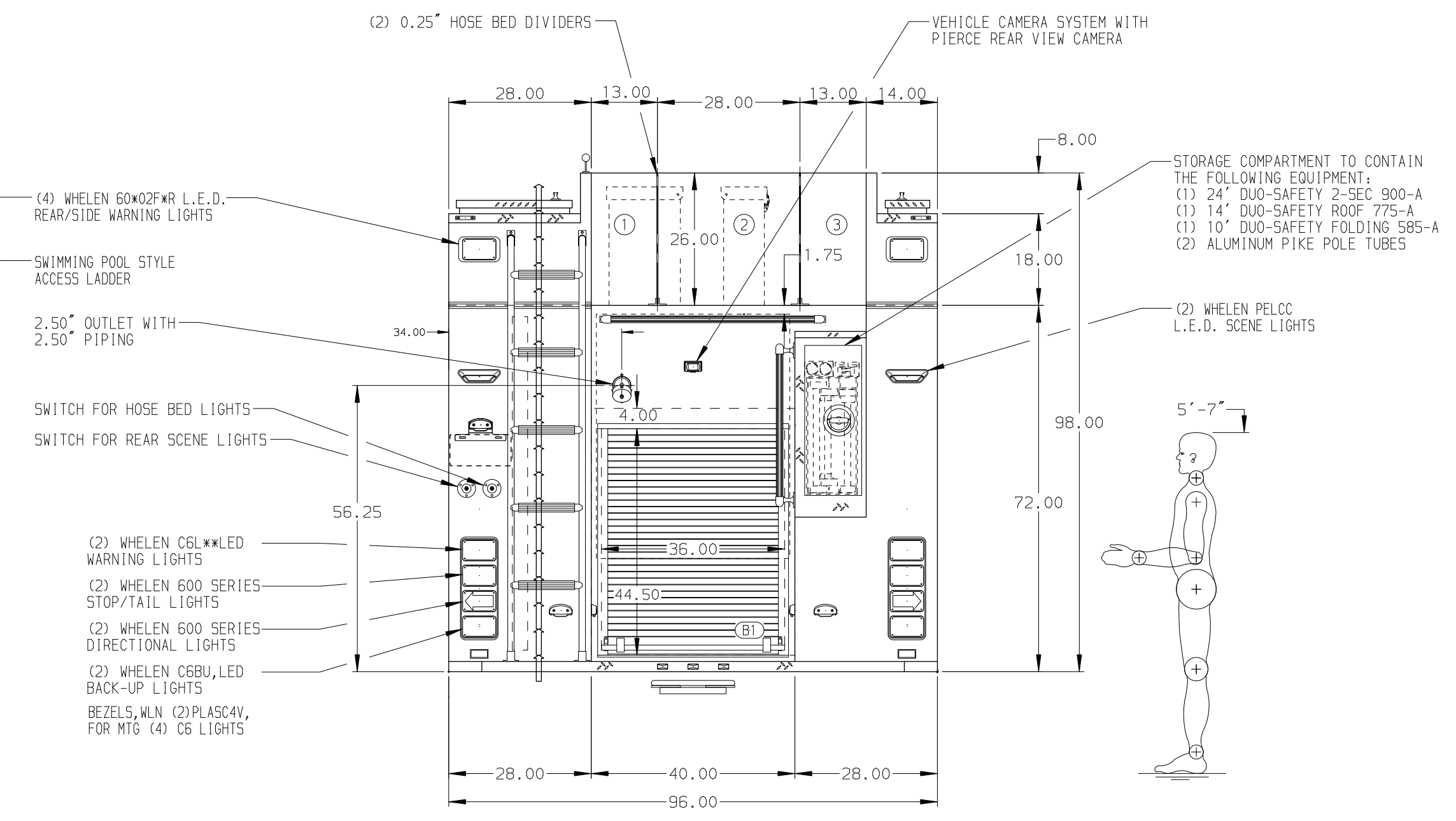
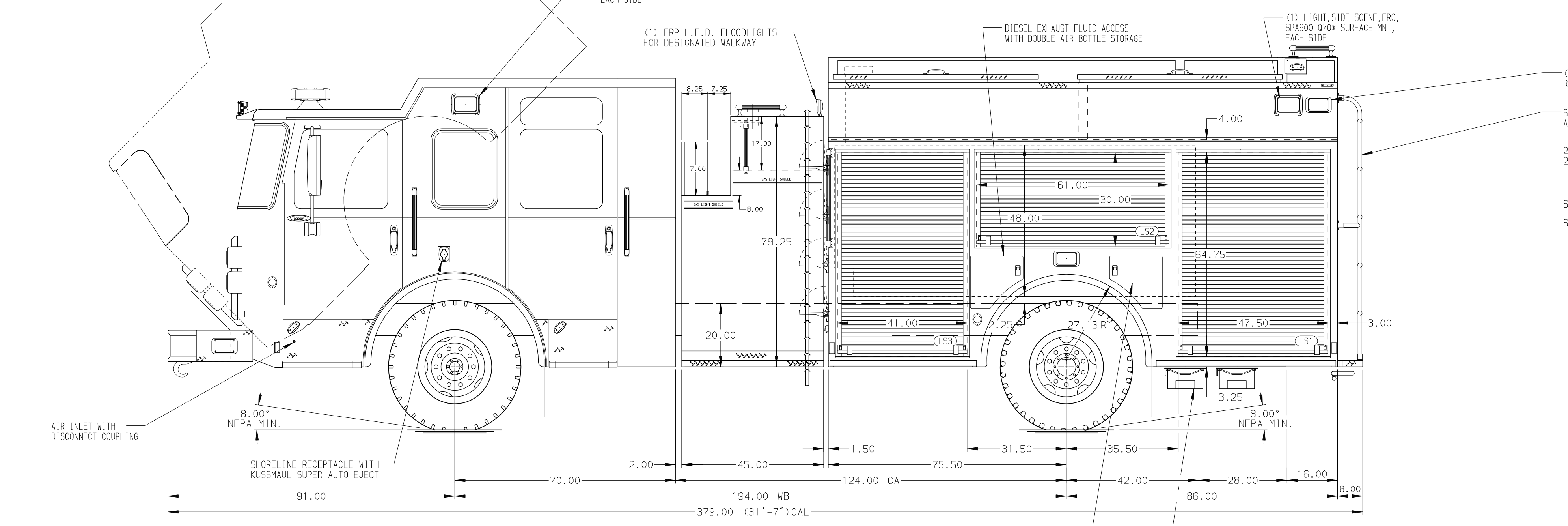


- HOSEBED CAPACITIES**
- ① 500' OF 3.00" D.J. POLY HOSE
 - ② 1000' OF 5.00" D.J. POLY HOSE
 - ③ 500' OF 3.00" D.J. POLY HOSE



ALUMINUM BODY

NOTE
 DIMENSIONS SHOWN ARE APPROXIMATE AND ARE SUBJECT TO MINOR DEVIATIONS AS MAY OCCUR OR BE NECESSARY IN CONSTRUCTION. MINOR DETAILS NOT SHOWN.

		JOB NO.	34900	
		SCALE	DATE	
CHASSIS DATA MAKE PIERCE MODEL SABER FR	TITLE	1500-D-750 W/20 GAL FOAM CELL, 161" BODY, DELUGE 45" SIDE CONTROLS, (2) 1.5" CROSSLAYS	DRAWN BY JLA	29JAN20
	FOR	PIERCE FIELD UNIT BRADENTON, FLORIDA	CHECKED BY CAG	28JAN20
	DWG NO.	34900AD	SHEET SIZE D	SHEET NO. 1 OF 1

REV	DATE	BY	CH