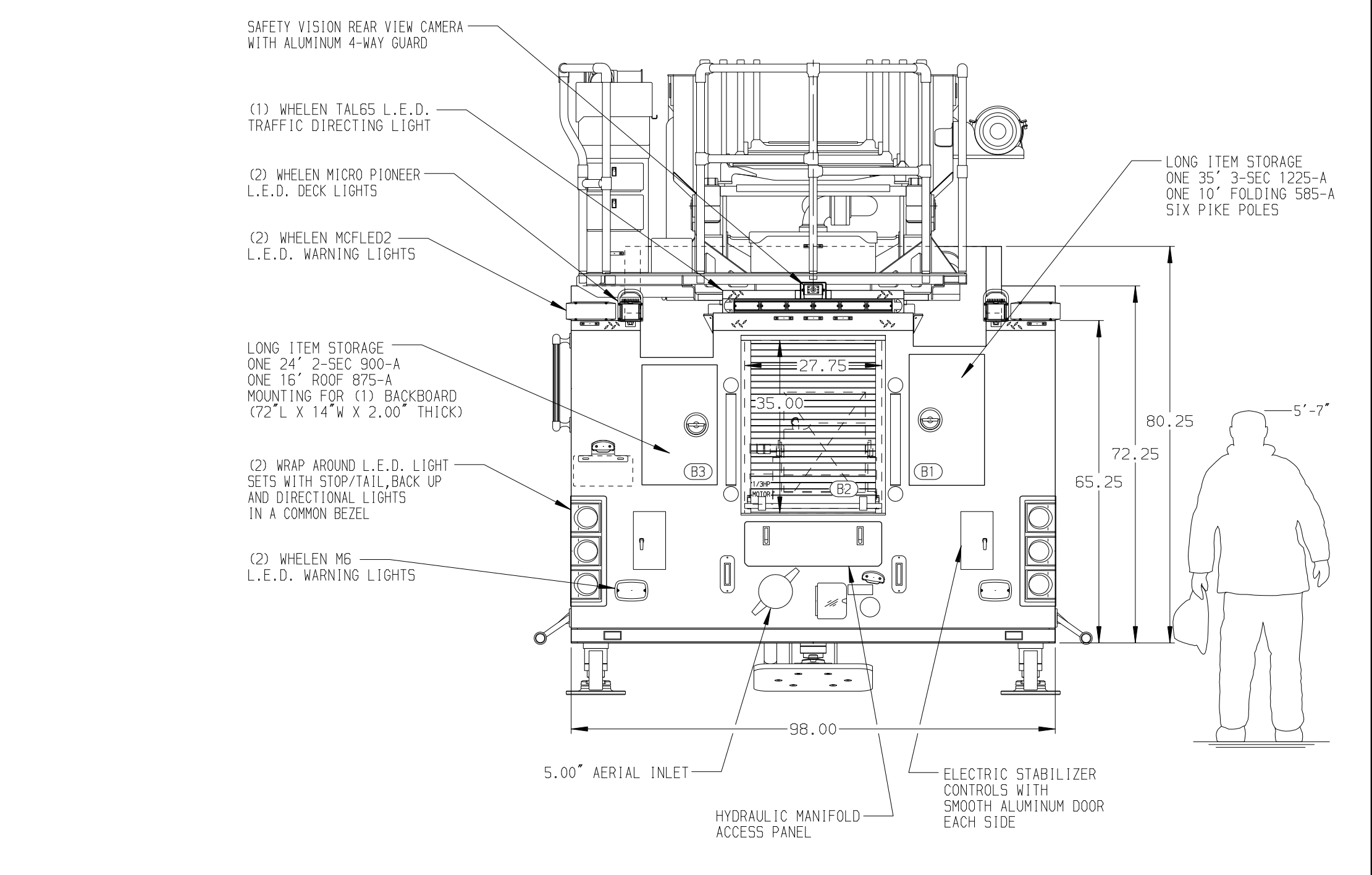


BODY 110' Single Axle Platform Aluminum Body PUC COMPT, LEFT SIDE FRONT Full Height RollUp Forward COMPT, LEFT SIDE REAR Full Height RollUp Rearward COMPT, RIGHT SIDE FRONT Full Height RollUp Forward COMPT, RIGHT SIDE REAR Full Height RollUp Rearward	WATER TANK 500 Gallon Poly Water Tank Foam System Foam System Not Required Foam Cell Foam Cell Not Required
--	---



CHASSIS Velocity Chassis (Big Block)	CAB 7010 Notched Velocity FR Cab, PUC	AXLE, FRONT, CUSTOM 24,000 Lb TAK-4 Axle	TRANSMISSION Allison 5th Gen, 3000 EVS P	PUMPHOUSE Control Zone, PAL/PAP PUC	CROSSLAYS, 1.50" (2) 1.50", Full Width Trays, 200'	DEADLAY (1) Full Width Tray, 50' OF 5.00"	SAFETY Side Roll and Frontal Impact Protection
ENGINE 450 HP Cummins L9 Engine	BUMPER 19" Extended Painted Steel	AXLE, REAR 33,500 Lb Meritor Axle		PUMP 1500 GPM Pierce PUC	CROSSLAYS, 2.50" (1) 2.50", Full Width Tray, 200'	GENERATOR Generator Not Required	

NOTE DIMENSIONS SHOWN ARE APPROXIMATE AND ARE SUBJECT TO MINOR DEVIATIONS AS MAY OCCUR OR BE NECESSARY IN CONSTRUCTION. MINOR DETAILS NOT SHOWN.	1. ONE 1.50 OUTLET WITH 2.00 PIPING AND SWIVEL LOCATED IN CENTER BUMPER TRAY 2. SHORELINE RECEPTACLE WITH KUSSMAUL SUPER AUTO-EJECT LOCATED IN THE DRIVER SIDE STEPWELL 3. AIR INLET WITH DISCONNECT COUPLING IN THE DRIVER SIDE STEPWELL 4. BATTERY CHARGER LOCATED IN COMPARTMENT PER SHOP ORDER 5. BATTERY CHARGE INDICATOR LOCATED IN THE DRIVER SIDE STEPWELL 6. SIX ADJUSTABLE SHELVES IN COMPARTMENTS PER SHOP ORDER 7. THREE FLOOR MOUNTED SLIDE-OUT TRAYS IN COMPARTMENTS PER SHOP ORDER 8. ONE ADJUSTABLE TILTING SLIDE-OUT TRAY IN COMPARTMENT PER SHOP ORDER 9. ONE SWING-OUT ALUMINUM TOOL BOARD IN COMPARTMENT PER SHOP ORDER 10. RECEPTACLE IN CAB AND BODY PER SHOP ORDER	11. SIX POLY TOOL BOXES IN COMPARTMENTS PER SHOP ORDER 12. ONE CTECH TWO DRAWER ASSEMBLY IN COMPARTMENT PER SHOP ORDER 13. TWO ADJUSTABLE VERTICAL PARTITIONS IN COMPARTMENTS PER SHOP ORDER 14. TWO STATIONARY VERTICAL PARTITIONS IN COMPARTMENTS PER SHOP ORDER 15. TWO ALUMINUM PEGBOARDS WITH TRACKS ON THE BACK WALL OF COMPARTMENTS PER SHOP ORDER 16. NON-RAISED AERIAL PEDESTAL 17. NO LIMITED RETRACTION REQUIRED 18. BREATHING AIR TO 110 19. AERIAL WIRELESS REMOTE CONTROL SYSTEM MOUNTED PER SHOP ORDER 20. 1250 GPM HIGH FLOW WATERWAY	21. SAFETY VISION FRONT VIEW CAMERA LOCATED PER SHOP ORDER 22. HANNAY MODEL EF24-23-24 WITH 100' OF 1.00" HOSE LOCATED IN COMPARTMENT R2
--	--	--	---

		JOB NO.	32855
MANUFACTURING INC.		SCALE	DATE
TITLE 110' ASCENDANT AERIAL PLATFORM AND BODY ASSEMBLY		DRAWN BY	22JUN18
FOR RICHLAND FIRE DEPARTMENT RICHLAND, MISSISSIPPI		CHECKED BY	26JUN18
DWG NO. 32855AD		SHEET SIZE	SHEET NO.
		D	1 OF 1